
Phalanx Biotech OneArray™ SimpleMeasure™ 1.4

User Guide

About this Guide

SimpleMeasure™ is a Java Applet designed to extract and analyze experimental control data generated from OneArray™ microarrays by Phalanx Biotech.

The program currently supports data supplied in the GenePix Results (.gpr) format and generates an Excel (.xls) output file. For more information on interpretation of the output, please see the *OneArray™ User Guide*.

This guide includes the following:

- Instructions At-a-Glance
- Detailed Instructions—Downloading, Installing and Using SimpleMeasure™ 1.4.

Instructions At-a-Glance

IMPORTANT: Make sure Java is installed on your computer. Instructions for installing Java are outlined in the detailed guide that follows these Quick Start instructions.

1. Download SimpleMeasure 1.4 from the Phalanx Biotech website and install by running "Setup.exe".
2. Start the program by choosing Start > Programs > PhalanxBiotech OneArray > SimpleMeasure.
3. Choose the type of OneArray™ you are using from the dropdown menu (**Human** or **Mouse**).
4. Click on **Open File** and browse to choose the gene source file that you want SimpleMeasure to run from your microarray scan.
5. Run SimpleMeasure 1.4 by clicking on the **Run** button. Select an Excel output file name. When the program ends, click **Finish** to complete the process.
6. Click **Exit** to quit the program.
7. Open the newly generated file to view the experimental control analysis.

Detailed Instructions--Downloading, Installing, and Using SimpleMeasure™ 1.4

IMPORTANT: Before you can run SimpleMeasure, you must have JDK or JRE (Java programs) installed on your computer. You can download the Java program from our Web site at:

www.phalanxbiotech/support/SimpleMeasure_downloads.html

or from the following Web site at:

<http://java.sun.com> (Screens 1 and 2)



Screens 1 and 2: Screenshots of the Sun Developer Network Web pages where you can download the Java program for use with SimpleMeasure 1.4.

Step 1: Downloading SimpleMeasure™ 1.4

To download SimpleMeasure 1.4, navigate to the following Web site:

http://www.phalanxbiotech.com/Support/SimpleMeasure_downloads.html

and click on **SimpleMeasure 1.4** to download the “Setup.exe” file to your computer.

Step 2: Installing SimpleMeasure

To install SimpleMeasure, double-click the “Setup.exe” file, and follow the on-screen instructions.

Step 3: Using SimpleMeasure

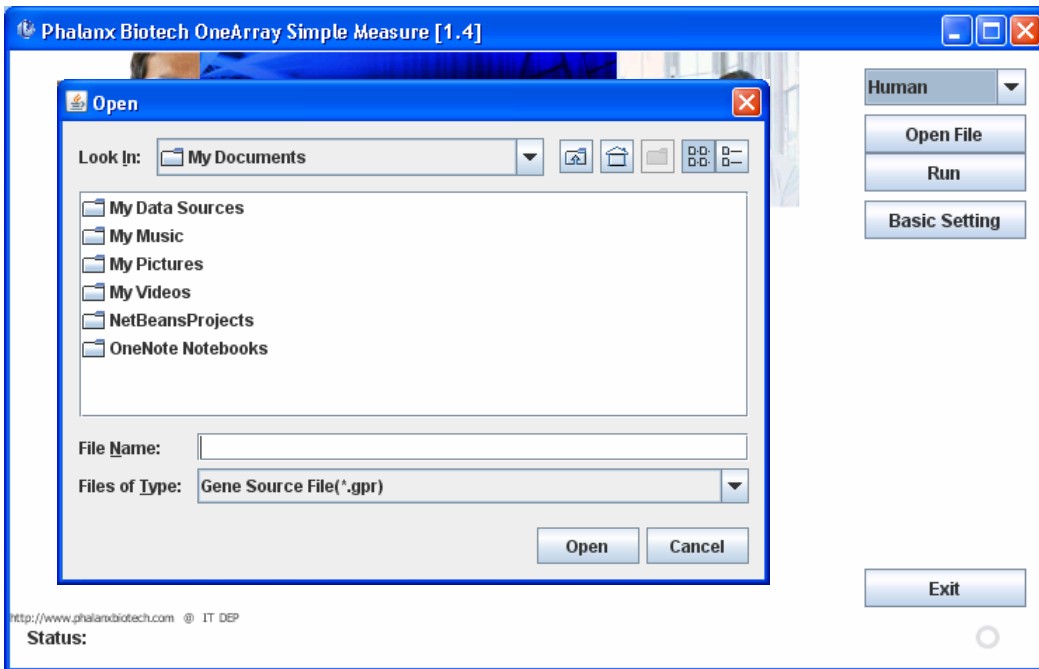
1. To start using SimpleMeasure, go to Start > Programs > PhalanxBiotech OneArray > SimpleMeasure. SimpleMeasure will begin and display the screen pictured below (Screen 3).



Screen 3: SimpleMeasure 1.4 program opening screen.

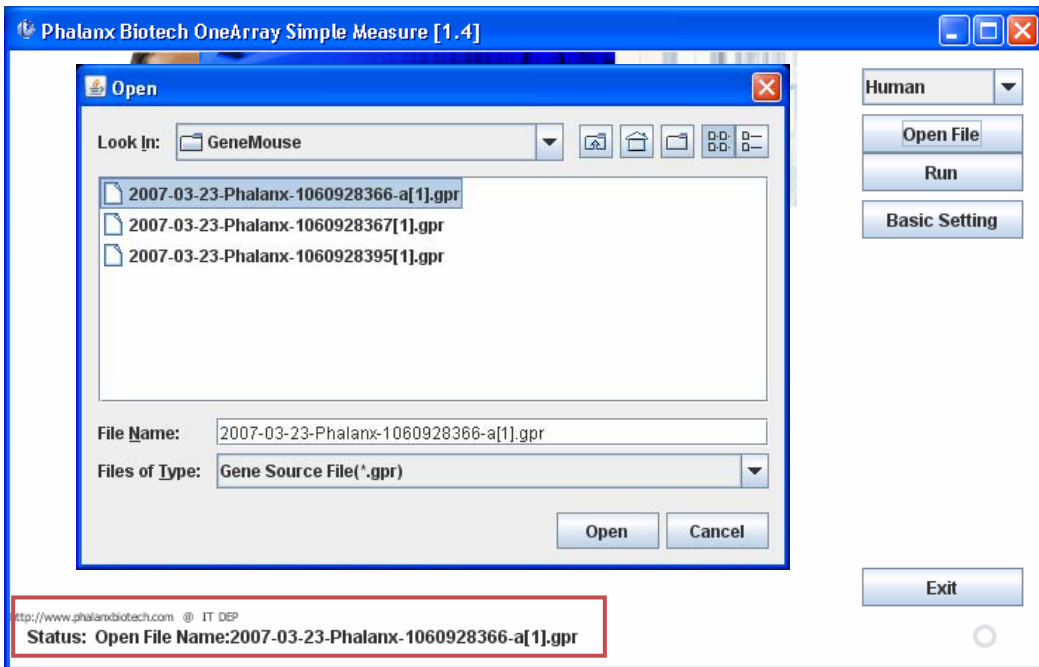
NOTE: If the program does not open, check to make sure that you have JDK or JRE installed properly on your computer. Refer to the first page of this guide for instructions about installing Java on your computer.

- From the dropdown menu in the upper right corner, select the appropriate OneArray microarray—Human or Mouse—and click on **Open File** (Screen 4).



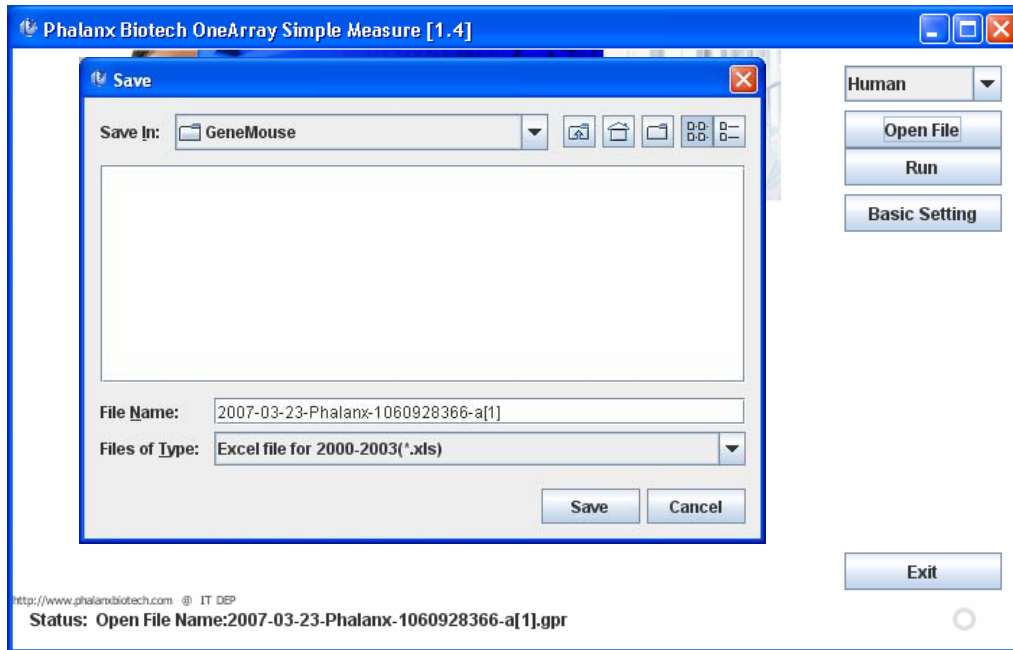
Screen 4: In the screenshot example above, *Human* OneArray was selected.

- Open the desired GenePix Result (*.gpr) file (Screen 5), and click on **Run**.



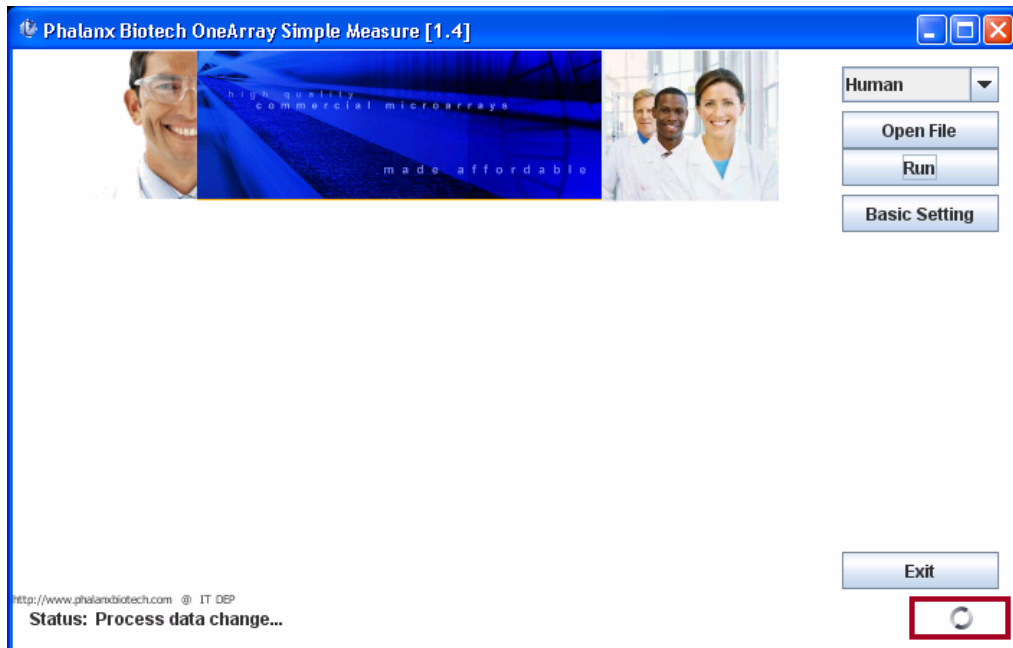
Screen 5: The red box, above, displays the filename that contains the data that is being analyzed by SimpleMeasure to generate the result file.

4. You will be prompted to name and save the Excel (*.xls) output file that will be generated by SimpleMeasure (Screen 6).



Screen 6: The *File Name* field displays the filename of the result file that will be generated by SimpleMeasure.

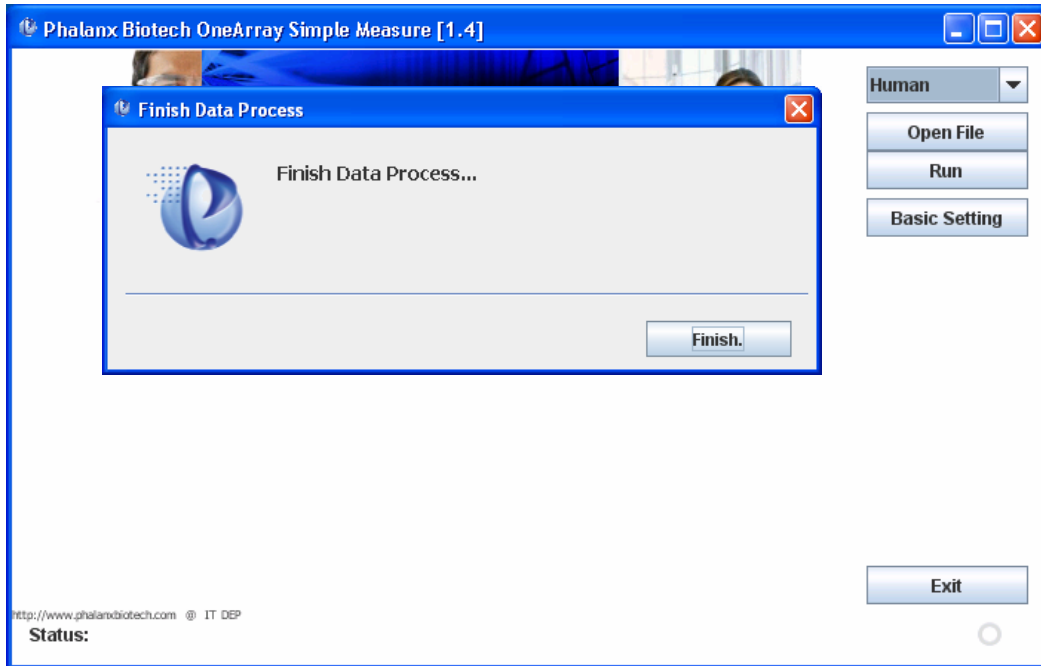
After you have saved the file, SimpleMeasure analyzes the data. The circular icon in the lower right corner of the screen indicates that the program is running (Screen 7).



Screen 7: The circular icon appears in the lower right corner while SimpleMeasure analyzes the experimental control data.

Step 4: Finishing & Viewing Data

When SimpleMeasure is done analyzing the file, the finish screen is displayed (Screen 8).



Screen 8: The data analysis is complete.

1. Click on **Finish** to complete the process. Click on the **Open File** button to analyze additional files or **Exit** to quit the program.
2. Open the newly generated output file (See **Step 3, item 4**) to view the experimental control data. For more information on interpretation of the output file, please see the *OneArray™ User Guide*.
3. **Optional:** You can change the font settings for the Excel output file *prior* to **Step 3, Item 3** by clicking on the **Basic Setting** button. Each tab corresponds to a different Excel Workbook page; each embedded chart can be assigned a new or unique set of fonts.

User Guide and Technical Support

Electronic version of this manual is available on the enclosed Product Support CD, and online at:

www.phalanxbiotech.com

To reach technical support by telephone, call

Within the US: 1.650.320.8669

Outside the US: 886.3. 5781168

Feedback

We welcome your feedback regarding our products and this manual. Please contact us at:

feedback@phalanxbiotech.com

All comments are welcome.

Contact Information

U.S. Office

Phalanx Biotech Group

1400 Page Mill Road, Bldg. B

Palo Alto, CA 94304-1124

Ph: 650.320.8669

FAX: 650.320.8488

E-mail: info@phalanxbiotech.com

Web site: www.phalanxbiotech.com

www.onearray.com

Asia Office

Phalanx Biotech Group

6 Technology Road 5, 6th Floor

Hsinchu Science Park

Hsinchu 30077, Taiwan

Ph: 886.3. 5781168

FAX: 886.3. 5785099

E-mail: info@phalanxbiotech.com

Web site: www.phalanxbiotech.com

Trademarks and Copyrights

Human OneArray™ and OneArray™ are trademarks of Phalanx Biotech Group, Inc. in the United States and in other countries. All trademarks and copyrights used in this manual belong to their respective owners and are the sole property of their respective owners. CyDye™ and Cy™ are trademarks of Amersham Biosciences. AlphaScan™ is a trademark of Alpha Innotech, Inc. ArrayWoRx® Biochip Reader is a registered trademark of Applied Precision®, Inc. GenePix™ is a trademark of Molecular Devices. GeneTAC™ is a trademark of Genomic Solutions®, Inc. ScanArray™ 5000 is a trademark of Perkin Elmer®, Inc. mSeries LifterSlip™ 25x601-M-5439 is a trademark of Erie Scientific Company®. Amino Allyl MessageAmp™ II aRNA is a trademark of Ambion®. ArrayControl™ is a trademark of Ambion®, Inc. Amino Allyl cDNA Labeling Kit is a trademark of Ambion®. Superscript Indirect Labeling System is a trademark of Invitrogen, Fairplay II Microarray Labeling Kit is a trademark of Strategene. Mini-Elute PCR purification is a trademark of Qiagen®. SpotReport is a registered trademark of Strategene, Inc. Last updated April 2007

© 2005 - 2007 Phalanx Biotech Group. All rights reserved.